



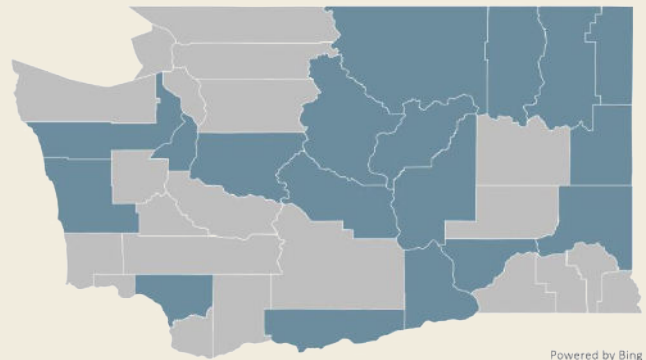
WA State Service Offerings

2023-2024

Supporting Local Health Jurisdictions In WA

VillageReach provides technical assistance in the areas of **data analytics and dashboarding, data modernization, strategic planning, community engagement, career development, community health assessments, evaluations and after-action reviews, improvement plans and equity-driven program design.**

We apply our technical assistance to many different health areas such as immunization, preparedness, communicable disease and infection prevention, epidemiology, and community health.



Powered by Bing
© GeoNames, TomTom

Counties where VillageReach has worked, 2020-2023

Service Offerings

VillageReach provides technical assistance in seven areas:

DATA ANALYTICS AND DASHBOARDS

VillageReach helps local health jurisdictions (LHJs) implement tools to make the analysis and use of complex data more automated, actionable, and equity-focused. Examples of our work include supporting LHJs in:

- **Creating dashboards to visualize data, including automated PowerBi dashboards, that can be used internally and/or shared with the public.** View an example of our work with NE Tri County here: <https://www.netchd.org/343/COVID---19-Data>.
- **Using data to make more equitable decisions.** For example, we have helped LHJs use geospatial analysis to identify under vaccinated populations (to the zip code level) and overlay that with information about vaccine deserts, social vulnerability index and other contextual factors.

DATA MODERNIZATION

We support LHJs in creating high-speed, modernized public health data infrastructure that provides public health departments and county residents with visibility into real-time data that can drive decision-making.

STRATEGIC PLANNING

VillageReach facilitates strategic planning for LHJs, both at the team and organizational levels.

VillageReach has guided multiple LHJs and teams through strategic planning for the next three to five years, including revisiting organizational/team mission, vision and values and determining strategic goals, objectives and metrics, and optimizing organizational structure. We have also supported LHJs in developing strategies to meet specific health goals, such as improving vaccine rates.

COMMUNITY ENGAGEMENT

VillageReach helps LHJs understand, engage and build trust with their communities through interviews and surveys with community members, improved communications efforts, and engaging community members to work with LHJs on designing programs and interventions.

EVALUATIONS, ASSESSMENTS, AND IMPROVEMENT PLANS

VillageReach works with LHJs to conduct evaluations and assessments, such as after-action reviews, community health assessments or evaluations of

specific programs or interventions. We bring expertise gathering qualitative and quantitative inputs from stakeholders, analyzing data, and packaging findings into actionable lessons learned and improvement plans.

CAREER DEVELOPMENT

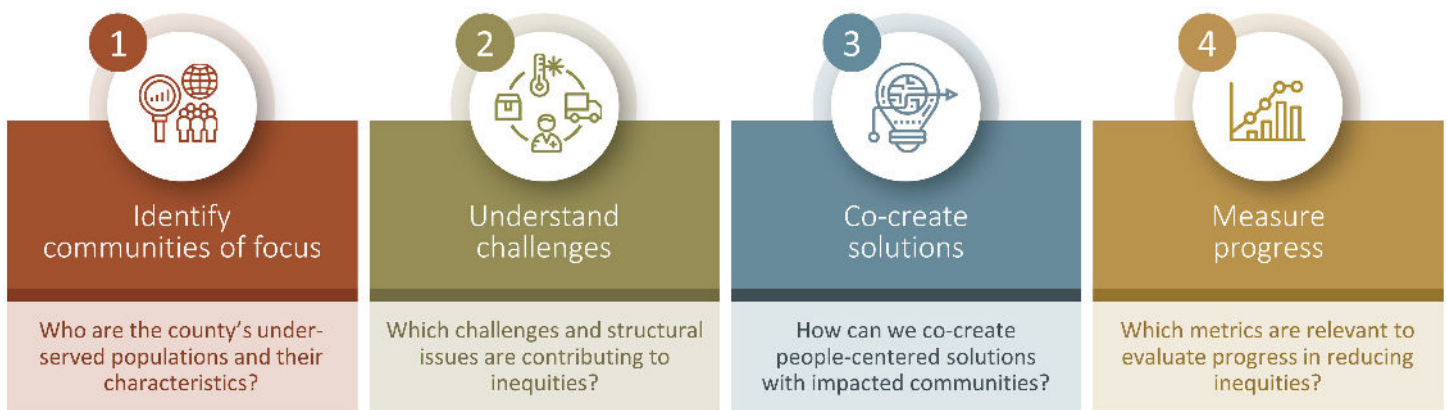
VillageReach supports the professional development of LHJ staff through experiential learning. We mentor staff to build new skills by working with them on real-life projects and deliverables. We have built LHJ staff skills in:

- **Data analytics:** Coaching staff in PowerBI and helping them create automated dashboards.
- **Community engagement:** Working with staff on ways to get feedback from their communities and working with them to translate learnings into action.
- **Community health assessments and evaluations:** Helping staff consider the most robust methods for their needs and working with them to apply best practices in conducting mixed methods community health assessments.

EQUITY-DRIVEN PROGRAM DESIGN

We work with LHJs to apply a four-step equity framework to the design of new and existing programs.

Through this process we help LHJs identify who in their community is currently under-reached, isolate what challenges or structural barriers are contributing to inequity, work with communities to co-create solutions and interventions and then develop ways to measure and evaluate progress.



VillageReach's Four-Step Equity Guide

If you are interested in working with or learning more about VillageReach, please contact **Erin Larsen-Cooper, Washington State Health Equity Program Lead**, erin.larsen-cooper@villagereach.org, (509) 994-0064

