

Integrating Outsourced Transport:

Building high-performing supply chains that are fit for purpose

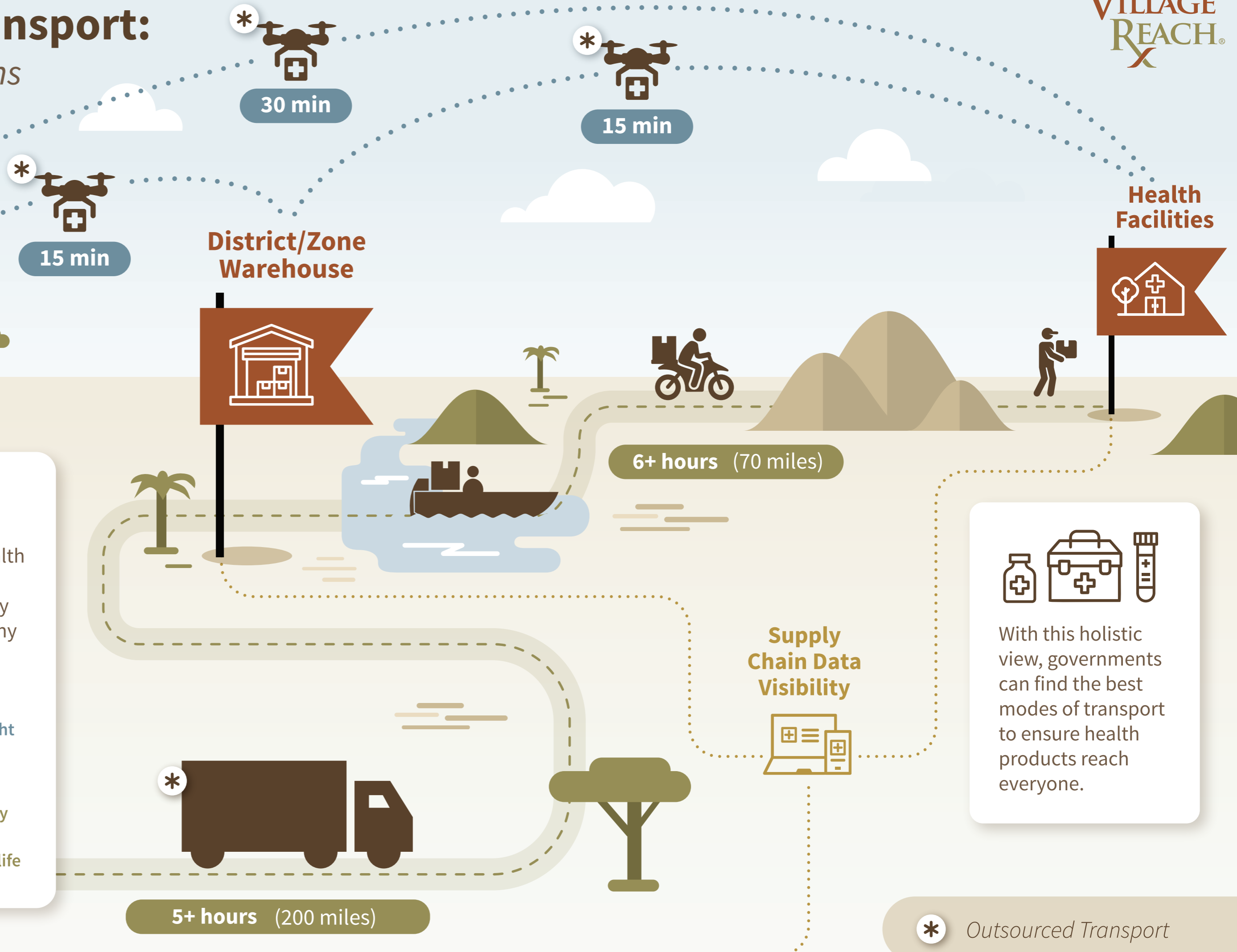
For effectiveness and sustainability, governments and their partners must consider integrating outsourced transport into the public health supply chain.



Fit for Purpose

Consider the weight, size and temperature sensitivity of health products being transported, geographical barriers that may restrict certain vehicles and any time constraints to avoid product spoilage.

- For routine delivery of light weight products, and on-demand services
- For routine delivery of any weight, including bulky products with long shelf-life



With this holistic view, governments can find the best modes of transport to ensure health products reach everyone.

* Outsourced Transport